

SPECIAL AUTOMOTIVE TOOLS

VACUUM TOOLS



FLUIDS



INJECTORS AND GLOW PLUGS



11



SPECIAL TOOLS



SPECIAL PULLERS AND PLIERS



BRAKES, HUBS AND TIRES



NEW

Special tool for plastic oil drain - Volkswagen TFSI and TDI

CODE	
FG 175/AT	

Set of 3pcs plastic oil drains - Volkswagen TFSI and TDI

CODE	
FG 175/PO	



Set for oil drain repair

- M13x1.25
- M13x1.5
- M15x1.5
- M17x1.5
- M20x1.5
- M22x1.5

CODE	
FG 175/S114	

NEW

Universal oil funnel

CODE	
FG 178/UF	



Special tank for fluid

CODE	CAPACITY	
FG 178/20L	20 Litri	



Battery liquid tester

CODE	L/mm	
FG 172/BL	380	



Fluid syringe

Particularly useful for brake fluid and antifreeze

CODE	CAPACITY	
FG 491/200	0.2 Liters	

Indicato per liquido freni e fluido anti-gelo
Non adatta per carburanti e olii minerali



Fluid syringe

Particularly useful for gear oil and differential fluid

CODE	CAPACITY	
FG 491/1500	1.5 Litri	

Non adatta per carburanti e olii minerali



Transmission filling system, for automatic/manual gearboxes and differentials

CODE	CAPACITY	
FG 176/S13	7.5 Litri	

- Supplied with 12 adaptors for direct connections
- Equipped of non-Return valve for leakage-free oil filling





Radiator cap pressure kit

- Supplied with 15 caps and 4 adaptors
- Pressure pump equipped with quick coupler and pressure release valve

CODE	Pcs	
FG 203/S20	21	

Heavy truck radiator tester

- Supplied with 6 caps and 1 adaptor
- Pressure pump equipped with quick coupler and pressure release valve

CODE	Pcs	
FG 203/S8	08	



Airvac coolant refiller

- Purge tapped air from cooling system to eliminate possibility of engine demagem due to overheating

CODE	Pcs	
FG 203/S7	07	





Pressure and depressure tester

CODE	
FG 202/PV	

IDEAL FOR:

- overpressure valves in turbo engines
- servo brakes
- pressure sensors of the fuel system
- electronic injection pressure regulating valves at low pressure
- condition of the cylinder head and pistons



Diesel fuel priming set

- Supplied with connectors

CODE	
FG 201/S7	



Device for testing Common Rail diesel electrical injectors

- allows up to 6 injectors to be measured simultaneously
- with adaptors for BOSCH, SIEMENS, DENSO y DELPHI

CODE	
FG 201/CR	



Adaptors

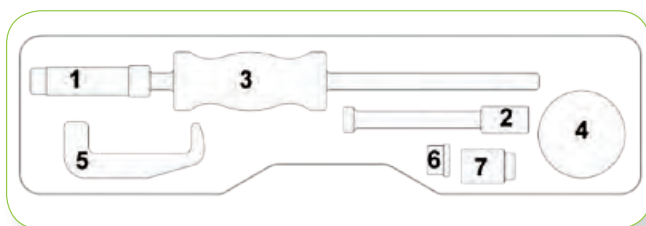


Quick couplings allows a faster use



Universal injector removal set suitable for Bosch and Delphi

CODE	
FG 190/ES	



CODE	DESCRIPTION	APPLICATION
FG 190/ES-1	Asta 440mm per massa battente - M16x1.5	Bosch
FG 190/ES-2	Asta 165 mm per massa battente - M16x1.5	Bosch
FG 190/ES-3	Massa battente da 2 kg	
FG 190/ES-4	Massa battente da 1,5 kg	
FG 190/ES-5	Estrattore a forchetta per iniettori Bosch	Bosch
FG 190/ES-6	Adattatore iniettori - M14x1.5	Delphi
FG 190/ES-7	Adattatore iniettori - M27x1.0	Bosch

Set of adaptors for injectors' removal suitable for Bosch, Delphi, Denso and Siemens

CODE	
FG 191/S21	

NEW

CODE	DESCRIPTION	APPLICATION	CODE	DESCRIPTION	APPLICATION
FG 191/ES-1	Adaptor M14X1.5	Delphi	FG 191/ES-11	Forch extractor 12 mm	Bosch
FG 191/ES-2	Adaptor M16X1.5		FG 191/ES-12	Forch extractor 13.5 mm	Bosch
FG 191/ES-3	Adaptor M25X0.5	Denso	FG 191/ES-13	Forch extractor 16 mm	
FG 191/ES-4	Adaptor M25X0.75	Denso	FG 191/ES-14	Forch extractor 26 mm	
FG 191/ES-5	Adaptor M27X1.0	Bosch	FG 191/ES-15	Universal joint	
FG 191/ES-6	Adaptor M16X1.0	Denso	FG 190/A25	Electronic injector's connection socket 25mm	Siemens
FG 191/ES-7	Adaptor M17X1.0	Bosch	FG 190/A27	Electronic injector's connection socket 27mm	Siemens
FG 191/ES-8	Adaptor M20X1.0	Denso	FG 190/A29	Electronic injector's connection socket 29mm	Bosch
FG 191/ES-9	Adaptor M25X1.0	Siemens	FG 190/A30	Electronic injector's connection socket 30mm	Bosch
FG 191/ES-10	Adaptor M27X1.0	Siemens	FG 190/EL	Puller for injector's electrodes \varnothing 7.5mm	
			FG 190/EL1	Puller for injector's electrodes \varnothing 6.9mm	



Universal injector removal set suitable for Bosch, Delphi, Denso and Siemens

- with hand sliding hammer -4.8KG

CODE	
FG 191/S22	



NEW

CODE	DESCRIPTION		APPLICATION
FG 191/ES-1	Adaptor M14X1.5		Delphi / Bosch
FG 191/ES-2	Adaptor M16X1.5		
FG 191/ES-3	Adaptor M25X0.5		Denso
FG 191/ES-4	Adaptor M25X0.75		Denso
FG 191/ES-5	Adaptor M27X1.0		Bosch
FG 191/ES-6	Adaptor M16X1.0		Denso
FG 191/ES-7	Adaptor M17X1.0		Bosch
FG 191/ES-8	Adaptor M20X1.0		Denso
FG 191/ES-9	Adaptor M25X1.0		Siemens
FG 191/ES-10	Adaptor M27X1.0		Siemens
FG 191/ES-11	Forch extractor 12 mm		Bosch
FG 191/ES-12	Forch extractor 13.5 mm		Bosch
FG 191/ES-13	Forch extractor 16 mm		
FG 191/ES-14	Forch extractor 26 mm		
FG 191/ES-15	Universal joint		

Universal injector removal set suitable for Bosch, Delphi, Denso and Siemens

- with pneumatic hammer

CODE	
FG 191/S23	



Injection nozzle extractor for Bosch, Delphi, Siemens and Denso

NEW

CODE	
FG 190/IP	



Special puller for Diesel injector electrodes

CODE	Ø mm	
FG 190/EL	7.5	



Electronic injector connections sockets for Bosch and Siemens

CODE	Ø mm	Applications	
FG 190/A25	25	Siemens	
FG 190/A27	27	Siemens	
FG 190/A29	29	Bosch	
FG 190/A30	30	Bosch	



Special set for injector's connections and electrodes

CODE	
FG 190/S5	





Diesel injection seat cutter set

CODE	
FG 190/S6B	

CONTENT:

- 01 flat cutter 17x19mm
- 01 flat cutter 15x19mm
- 01 flat cutter 17x17mm
- 01 conical cutter 17x21mm
- 01 conical cutter 17x17mm



Special cleaning set for diesel injection seat and diesel spark plugs seat

CODE	
FG 190/S21	

- 1/4"dr. flexible long bit holder
- Brush holder - 1/4"dr.
- Brush - ø 19mm
- Long brush - ø 7mm
- Universal brush
- Caps for central hose

- Caps-holder
- Universal tool for copper seal
- Main tool
- Centering cones
- Side milling tool
- Injector adaptor



Set of 6 open end ring wrenches for fuel injection connections

- 12, 14, 16, 17, 18, 19mm
- 1/2" drive

CODE	
FG 190C/S6	





Adjustable wrench for fuel tank floating ring nuts

Ø 88-170mm

CODE	
FG 174/SC	



Adjustable wrench for fuel tank floating ring nuts

Ø 160-205mm

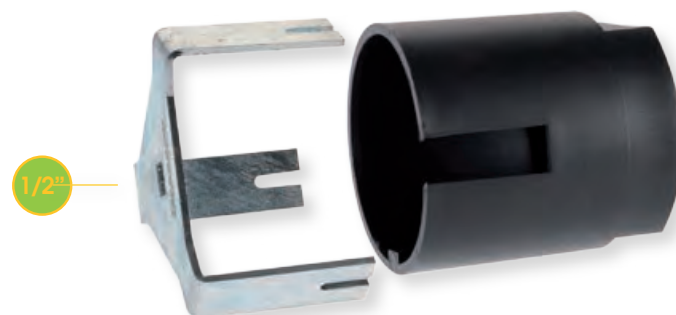
CODE	
FG 173/SC3	



Adjustable wrench for fuel tank floating ring nuts

Ø 85-120mm

CODE	
FG 173/SC1	



Diesel fuel filter wrench for MULTIJET LANCIA, OPEL CDTI, SUZUKI DDiS

Ø 90mm

CODE	
FG 173/FG2	



Diesel fuel filter wrench for HDI

Ø 27mm
- 1/2" drive

CODE	
FG 175/FG3	



Diesel fuel filter wrench for VOLVO
- 3/8" drive

CODE	
FG 175/FG4	





**Glow plug remover
and repair set for
M8, M9, M10**

CODE	
FG 182/S16	



**Special
TITANIUM drill**

**Heavy duty
puller**



**Repairing set damaged
spark plug threads**

CONTENT:

- Bushes:
M8x1,0 - M10x1,0 - M10x1,25 - M12x1,25
- Taps:
M8x1,0 - M10x1,0 - M10x1,25
M12x1,25, M14x1,25

CODE	
FG 182/S33	



**Diesel engine glow
plug socket wrench**

CODE	Ø mm	■	
FG 183/B8	8	1/4"	
FG 183/B9	9	1/4"	
FG 183/B10	10	1/4"	
FG 183/B12	12	1/4"	
FG 183/B14	14	1/4"	



**Set of 5pcs Diesel engine
glow plug socket wrenches**

CODE	Ø mm	■	
FG 183/S5	8, 9, 10, 12, 14mm	1/4"	

3/8"dr. spark plug socket



CODE	Ø mm	
FG 181/A14	14	
FG 181/A16	16	
FG 181/A18	18 (11/16")	
FG 181/A21	21 (13/16")	

3/8"

1/2"dr. spark plug socket

CODE	Ø mm	
FG 181/B14	14	
FG 181/B16	16	
FG 181/B18	18 (11/16")	
FG 181/B21	21 (13/16")	

1/2"



Metric feeler gauge

CODE	Blades	mm	
FG 188/1	13	0.05, 0.10, 0.15, 0.20, 0.25, 0.30, 0.40, 0.50, 0.60, 0.70, 0.80, 0.90, 1.00	
FG 188/2	20	0.05, 0.15, 0.20, 0.25, 0.30, 0.35, 0.40, 0.45, 0.50, 0.55, 0.60, 0.65, 0.70, 0.75, 0.80, 0.85, 0.90, 0.95, 1.00	

T-Handle spark plug wrenches with swivelling sockets

CODE	Ø mm	
FG 181T/A14	14	
FG 181T/A16	16	
FG 181T/A21	21 (13/16")	

Set of 3pcs T-Handle spark plug wrenches with swivelling socket

CODE	Ø mm	
FG 181/S3	14, 16, 21mm	



3/8"dr. special spark plug sockets - 12PT

CODE	Ø mm	L/mm	
FG 181/RE1	14	250	
FG 181/RE2	16	250	

- 14mm: BMW Mini, Citroën, Peugeot, Renault e Mercedes
 - 16mm: BMW, Vauxhall/Opel, Jaguar e giapponesi

Set of 2pcs 3/8"dr. spark plug sockets - 12PT

CODE	CONTENT	L/mm	■	
FG 181RE/S2	14, 16 mm	250	3/8"	





**NEW
CODE**

Threaded coil insert repair set

- M5 - 0.8x1.5
- M6 - 1.0x1.5
- M8 - 1.25x1.5
- M10 - 1.5x1.5
- M12 - 1.75x1.5

CODE	
FG 181/S130	

Threaded coil insert repair set

- M6 - 1.0x1.5
- M8 - 1.25x1.5
- M10 - 1.5x1.5
- M12 - 1.75x1.5
- M14 - 1.25x1.5

NEW

CODE	
FG 181/S115	



Threaded coil insert repair set

- M14 - 1.25x1.5

CODE	
FG 181/S17	

NEW



Insert coils

CODE	Ø mm	Minimum Quantity	
FG 193/M5	M5x0.8x1.5	50	
FG 193/M6	M6x1.0x1x15	50	
FG 193/M8	M8x1.25x1.5	50	
FG 193/M10	M10x1.5x1.5	50	
FG 193/M12	M12x1.75x1.5	25	
FG 193/M14	M14x1.25x1.5	25	



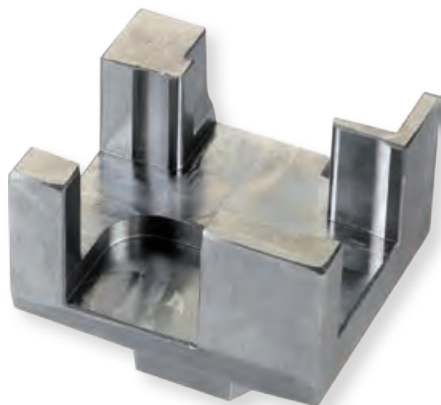
Socket for lambda probe

CODE	mm	L/mm	
FG 183/B85	22	85	
FG 183/B110	22	110	



Impact socket bits for cylinder head bolts - XZN9

CODE	L/totale	L1/mm	
FG 152L/RM9	120mm	95	



**CNG socket for valve tank
FIAT MULTIPLA and PUNTO CNG
(VBE 517, VBE 520, VBE 474 e VALE 110)**

CODE	DRIVE	
FG 800/2	36mm	



**Special socket for CNG valve tank
FIAT PANDA, PUNTO EVO, VW**

CODE	DRIVE	
FG 800/3	33mm	



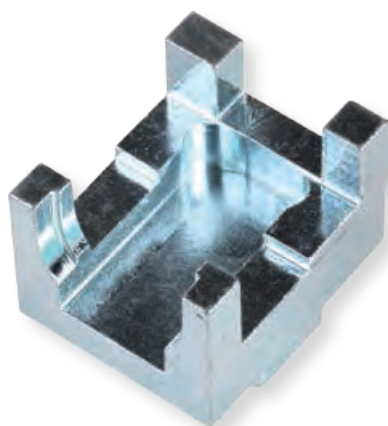
**Special socket for
CNG valve tank OPEL ZAFIRA**

CODE	DRIVE	
FG 800/5	36mm	



**Special socket for
CNG valve tank MCR 110**

CODE	DRIVE	
FG 800/6	36mm	



**Special socket for CNG valve
tank NEW FIAT PANDA**

CODE	DRIVE	
FG 800/7	36mm	

NEW



**Special socket for CNG valve
tank CITROEN C4 PICASSO**

CODE	DRIVE	
FG 800/8	36mm	



Valve springs installing and removal tool

CODE	
FG 190/SV	



Alternador pulley free wheel wrench - BOSCH

CODE	TEETH	A/mm	•	
FG 179/PA20	33	19.45	17mm	



Alternador pulley free wheel wrench

CODE	Ø mm	
FG 179/H10	H10	



Alternador pulley free wheel wrench

CODE	TX	
FG 179/T50	TX50 - 31 TEETH	



Alternador pulley free wheel wrench FIAT GRANDE PUNTO

CODE	M	
FG 179/GP	10	



Set of special tools for alternators pulley free wheels

CODE	
FG 179/S16	



Set of 4pcs ignition coil puller

CODE	
FG 195/S4B	



Universal tools for expanding air bag

CODE	
FG 185/S12	



- 1- TX30 - Audi, Opel, Renault, Volkswagen
- 2- TX25 - BMW
- 3 -RTX30 - Audi, BMW, Mercedes, Opel
- 4 -RTX25 - BMW
- 5 -H5 - Audi
- 6 -Volkswagen, Audi, Seat, Skoda, BMW, Mercedes
- 7 -VW Passat B5, Polo, Lupo, Audi A4, A6, Skoda Super B
- 8 -VW Golf 4, New Beetle, Seat, Skoda Fabia e Octavia
- 9 -VW Golf 4, VW Passat e Bora
- 10 -Volkswagen

Fuel and air condition line disconnect set

CODE	
FG 185/S27	

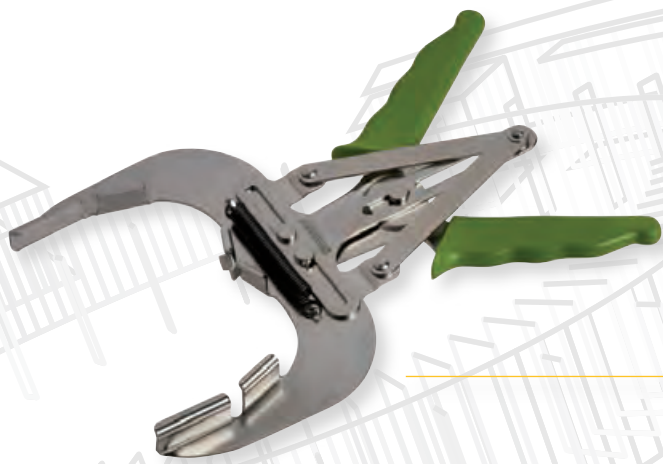


Special tester kit for TURBO system control

CODE	
FG 189/S13	

Sizes:
31, 38 46, 51, 55, 60, 65, 70
75, 80, 85, 90mm





Piston ring pliers

CODE	Ø mm	
FG 197/B1	50-100	
FG 197/B2	80-120	
FG 197/B3	110-160	

Piston ring compressor

CODE	Ø mm	H mm	
FG 197/A3	53-125	76	
FG 197/A4	90-175	100	
FG 197/A6	90-175	152	



Camshaft and Crankshaft seal remover/installer set

Sizes:

28, 34, 42, 46, 48, 49, 52,
56, 58, 60, 64, 68 Ø/mm

CODE	
FG 178/S25	



CLUTCH ALIGNMENT TOOLS



Centerings' sizes:
Ø12-20mm

CODE	
FG 180/S12	



Centerings' sizes:
Ø14-18, 18-21, 22-25mm

CODE	
FG 180/CF	



Manual/Pneumatic fluid extractor

- Capacity: 9 Liters
- equipped with universal couplings

CODE	
FG 492/AL	

Pneumatic extractor for brake fluid

- Capacity: 2 Liters
- equipped with universal couplings

CODE	
FG 178/BF	



FLUIDS' SUCTION



Pneumatic tool for pushing back and rotating right and left disc brake pistons with accessories

CODE	CONTENT	
FG 199/PF	18 pz	



Adaptor for worn calipers

CODE	
FG 199/PFP	





Special tool for pushing back disc brake pistons with closed callipers

- Capacity: 13-105mm

CODE	
FG 199/PF1	



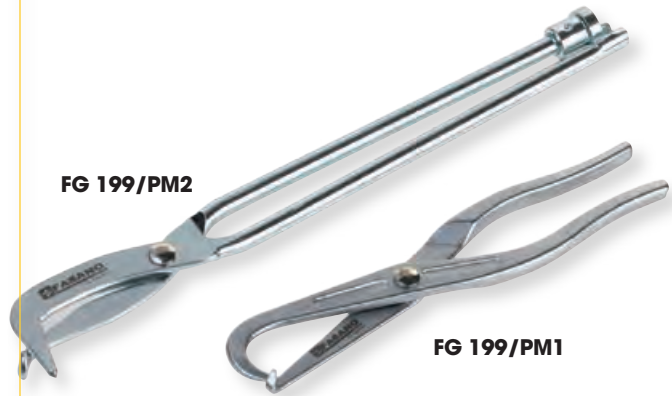
Universal drum brake retaining spring clamp pliers

CODE	L/mm	
FG 199/FM	185	



Drum brake spring pliers

CODE	L/mm	
FG 199/A	330	



FG 199/PM2

FG 199/PM1

Drum brake spring pliers

CODE	L/mm	
FG 199/PM1	210	
FG 199/PM2	330	



Drum brake spring pliers

CODE	L/mm	
FG 199/PM3	540	



Pliers for locking rings

CODE	L/mm	
FG 165/FC	215	



Hub impact socket bit

CODE	mm	L/mm	
FG 152/RM12	12	78	
FG 152/RM14	14	78	
FG 152/RM16	16	78	
FG 152/RM18	18	78	

Set of 4pcs hub nut socket bits

CODE	CONTENT	
FG 152RM/S4	RM12, RM14, RM16, RM18	



1/2"dr. hub nut sockets



CODE	Ø mm	Ø mm EXTERNAL	Drive	
FG 198/A30	30	42	1/2"	
FG 198/A32	32	44	1/2"	
FG 198/A34	34	47	1/2"	
FG 198/A35	35	49	1/2"	
FG 198/A36	36	50	1/2"	



1"dr. hub nut socket IVECO Daily

CODE	Ø mm	Ø mm EXTERNAL	Drive	
FG 630/B65	65	87	1"	

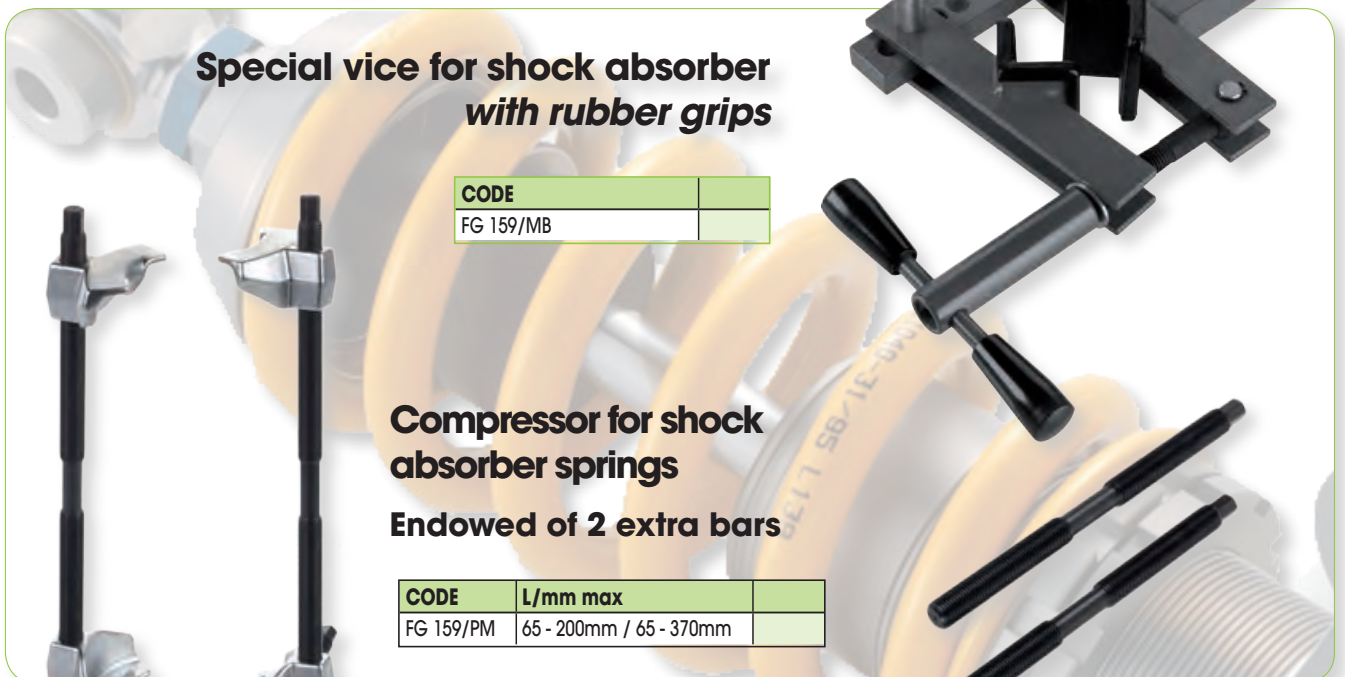
Special vice for shock absorber with rubber grips

CODE	
FG 159/MB	

Compressor for shock absorber springs

Endowed of 2 extra bars

CODE	L/mm max	
FG 159/PM	65 - 200mm / 65 - 370mm	



1/2"Dr. Deep impact socket for aluminum wheel

CODE	mm	L/mm	
FG 628/R15	15	86	
FG 628/R17	17	86	
FG 628/R19	19	86	
FG 628/R21	21	86	
FG 628/R22	22	86	



Set 1/2"dr. deep impact sockets for aluminum wheels

CODE	Pz	CONTENT	
FG 628/S3	3	17, 19, 21mm	
FG 628/S5	3	15, 17, 19, 21, 22mm	



1/2"Dr. Deep impact socket for aluminum wheel

CODE	mm	L/mm	
FG 628R/L17	17	150.0	
FG 628R/L19	19	150.0	
FG 628R/L21	21	150.0	



Set of 3pcs 1/2"dr. deep impact sockets for aluminum wheel

CODE	Pz	CONTENT	
FG 628L/S3	3	17, 19, 21mm	



Wheel balancing weight pliers with soft-run system

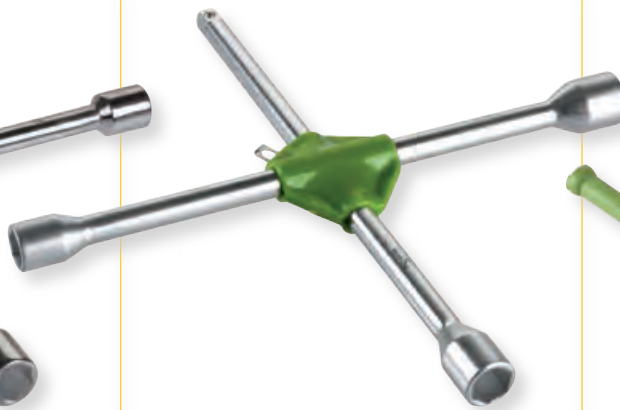
CODE	mm	Inch	
FG 65SR/250	250	10"	





Wheel nut wrench

CODE	Ø/mm	
FG 198/A1	17x19x22x1/2"	
FG 198/B1	24x27x32x3/4"	



Wheel nut wrench

CODE	Ø/mm	
FG 198/A2	17x19x22x1/2"	



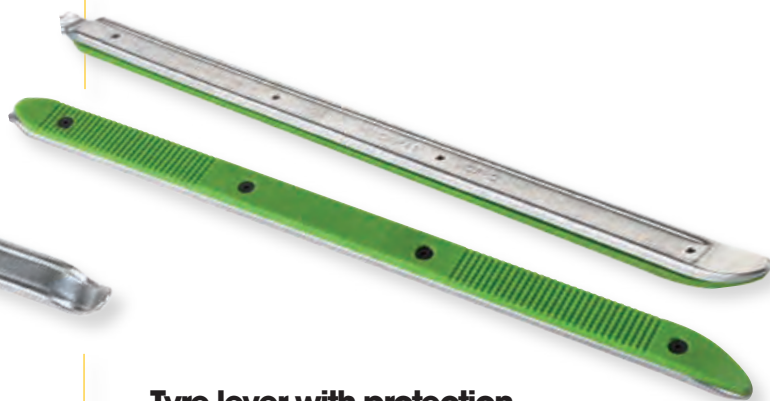
Tyre valve lever

CODE	L/mm	
FG 126/VP	335	



Tyre lever

CODE	L/mm	
FG 126/A300	300	
FG 126/A400	400	
FG 126/A500	500	
FG 126/A600	600	



Tyre lever with protection for aluminum wheel

CODE	L/mm	
FG 126/P500	500	



4pcs nylon levers set

CODE	
FG 186P/S4	



Wheel nut's protection remover

CODE	
FG 164	



Desmounting socket for MERCEDES antitheft wheel nuts

CODE	
FG 164/M17	



Desmounting set for BMW antitheft wheel nuts

CODE
FG 164/A



Desmounting set for VW antitheft wheel nuts

CODE
FG 164/B



Desmounting set for BMW antitheft wheel nuts

CODE
FG 164/C



Desmounting set for VW antitheft wheel nuts

CODE
FG 164/D



NEW

Desmounting set for AUDI antitheft wheel nuts

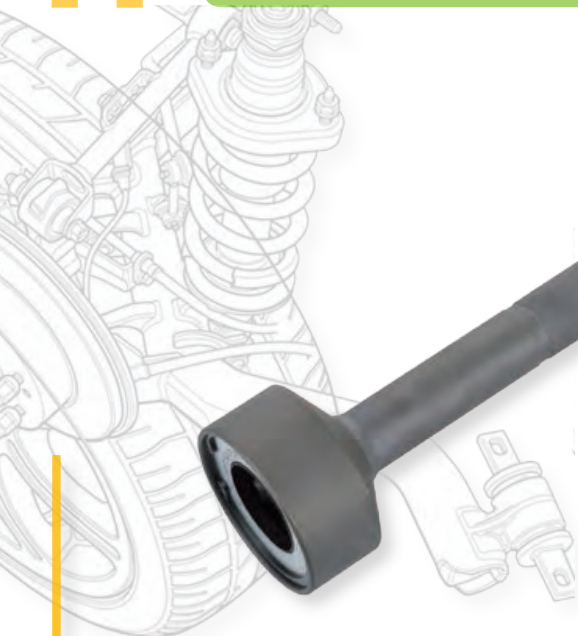
CODE
FG 164/E



Desmounting set for antitheft wheel nuts - UNIVERSAL

CODE
FG 164/S10





Special tool for installing and removing steering arms

CODE	Ø/mm	Ø mm EXTERNAL	●/mm	L/mm
FG 169/BS	35 - 45	73	1/2" o 27mm	400
FG 169/BS1	28 - 35	89	1/2" o 27mm	400



Homokinetic joint puller

CODE	Ø/mm	L/mm	L1/mm
FG 165/GO1	32	250	104



Ball joint puller

CODE	Ø mm	L/mm
FG 168/1	18 x 36	39
FG 168/2	25 x 46	47
FG 168/3	65 x 62	47
FG 168/4	40 x 63	75



Ball joint puller

CODE	
FG 168/E	

A/mm: 23.5
B/mm: 25.0
C/mm: 55



Ball joint puller

CODE	Ø/mm	L/mm	
FG 169/FO1	18	400	
FG 169/FO2	23	400	
FG 169/FO3	30	400	



Ball joint puller

CODE	Ø/mm	L/mm	
FG 169/1	19	38	



Ball joint puller

CODE	Ø/mm	L/mm	
FG 169/2	22	30-56	
FG 169/3	20	50-80	



Inner bearing puller set

NEW

CODE	
FG 166/S7	

- Chucks: Ø 40-45mm, 45-51mm, 50-55mm, 55-61mm
- Wrenches: Ø 82.7mm, 58.9mm

Useful for:
Audi-Volkswagen,
BMW, Ford, Fiat,
Mercedes, Opel,
Renault, Seat,
Skoda, Porsche,
Peugeot, Volvo





Special tool set for installing and removing SILENT BLOCK

- sockets for \varnothing 44-82mm
- 4 threaded bars M10, M12, M14, M16

CODE	
FG 165/S26	



Special tool set for installing and removing SILENT BLOCK Fiat Panda 4x4 and Panda CNG

CODE	
FG 165/S7	

Special tool set for installing and removing SILENT BLOCK MINI COOPER R50/R53



CODE	
FG 165/S6	



Special tools for installing and removing wheel bearings

- 8 removing sockets \varnothing 34-45mm
- 11 installing sockets \varnothing 60-84mm

NEW

CODE	
FG 166/S28	



Hydraulic jack - 17Ton

CODE	
FG 166/M17	

NEW





Set of crimping pliers and Weather-pack terminals

CODE	
FG 185/S190	



Terminal release tool

CODE	
FG 185/K20	



Male terminal

CODE	Ø/mm ²	Quantity	
FG 185/K1	0.5-0.85	20pz	
FG 185/K4	1.25-2.0	20pz	
FG 185/K7	3.0	20pz	



Female terminal

CODE	Ø/mm ²	Quantity	
FG 185/K2	0.5-0.85	20pz	
FG 185/K5	1.25-2.0	20pz	
FG 185/K8	3.0	20pz	



Wire seal

CODE	Ø/mm ²	Quantity	
FG 185/K3	1.4-1.9	25pz	
FG 185/K6	2.0-3.4	30pz	
FG 185/K9	2.9-3.8	25pz	



Male connector

CODE	Poles	Quantity	
FG 185/K10	1	3pz	
FG 185/K12	2	2pz	
FG 185/K14	3	1pz	
FG 185/K16	4	1pz	
FG 185/K18	4	1pz	



Female connector

CODE	Poles	Quantity	
FG 185/K11	1	3pz	
FG 185/K13	2	2pz	
FG 185/K15	3	1pz	
FG 185/K17	4	1pz	
FG 185/K19	4	1pz	

HOSE RINGS

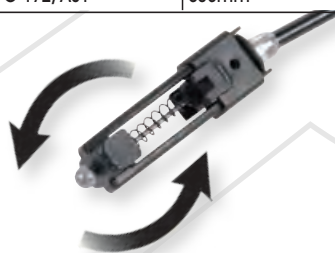
Automatic hose ring pliers with extension

CODE	L/Extension	
FG 172/AS	630mm	



Automatic hose ring pliers with extension and swivel head

CODE	L/Extension	
FG 172/AS1	630mm	



Hose clip pliers

CODE	
FG 172/FA	



Special tools for hose rings locking

CODE	CAPACITY	
FG 172/HS1	0 - 60mm	
FG 172/HS2	0 - 85mm	



FLUG FLANGERS

Flug flanger pliers

CODE	DRIVE	
FG 172/GO	3/8"	

Flug flanger pliers

CODE	L/mm	
FG 172/OT	230	



C.V. Clamp banding tool with cutter

CODE	Ø/mm	
FG 172/PA	4.7 - 9.5	

For use with Panduit ties



Hose clip pliers

CODE	L/mm	
FG 172/CL	173	



External butt-ended circlip pliers

CODE	CAPACITY	
FG 55/SP	30 - 100mm	



Fuel feed pipe pliers

CODE	L/mm	
FG 171	155	

Fuel feed pipe pliers

CODE	L/mm	
FG 171/N	155	

Fuel feed pipe pliers

CODE	
FG 171/B	

Fuel feed pipe pliers - MULTIJET

CODE	L/mm	
FG 172/MJ	230	

Plastic hose pliers

CODE	Ø mm	L/mm	
FG 170/1	8-15	160	
FG 170/2	15-25	190	
FG 170/3	25-45	220	



Set of 3pcs plastic hose pliers

CODE	CONTENT	
FG 170/S3	FG 170/1, FG 170/2, FG170/3	

Valve seal removal pliers

CODE	L/mm	
FG 174	270	



Spark-plug pliers

CODE	L/mm	Ø mm/min	
FG 172/CA	290	14	



Relay removal pliers

CODE	Ø mm/min	
FG 172/RL1	15 - 50mm	



Relay removal pliers

CODE	Ø mm/min	
FG 172/RL2	15 - 50mm	



Bent patterns, 60°

**RELAY
PLIERS**

Special tool for nozzle adjusting

CODE	
FG 195/U	



Special wrench for turbo charger

CODE	mm	■	
FG 196/A12	22	3/8"	



To complete the big range of special tools for here it's possible to find all the special items for Truck.

Also in this case, after a long period of R&S, FASANO Tools offer a complete range of tools for timing and for hub nuts



Engine crankshaft rotator Mercedes Benz e MAN *- double gear*

Models:
Merceder-Benz 6, 8, 10 cilindri
MAN 12 cilindri

Engine code:
401, 404, 407, 409, 421, 424, 444, 427, 447

CODE	
FG 197/MB1	

NEW



Engine crankshaft rotator Mercedes Benz e MAN *- triple gear*

Models:
Merceder-Benz Actros e Atego;
MAN 5, 6, 8 cilindri

CODE	
FG 197/MB2	

NEW



Engine crankshaft rotator MAN

Engine code:
D20..., D25..., D26..., D28...

CODE	
FG 197/MA1	

NEW



1/2"

Engine crankshaft rotator SCANIA

Models:
SCANIA (dopo il 1996)

CODE	
FG 197/SC1	

NEW



Engine crankshaft rotator VOLVO

Engine code:
D9A, D12, D16C

CODE	
FG 197/VO1	

NEW



1/2"

46 mm

Engine flywheel turning tool VOLVO and RENAULT

Models:
HGV Volvo
RENAULT

Engine code:
MP8, MP10 (FH, D13A520)

CODE	
FG 197/VO2	

NEW



Engine crankshaft rotator IVECO

- double gear

Engine code: 8040.25.45, 8060.25.45, 8260, 8210.42
8280, 8460, 190.38, 190.42

CODE	
FG 197/IV1	

NEW

Engine crankshaft rotator IVECO

- double gear

Engine code: 8360.46, F3A, F3B

CODE	
FG 197/IV2	

NEW



24 mm

Engine crankshaft rotator DAF

Engine code:
65CF, 75CF, 85CF, 95XF, CF75,
CF85, F65, F75, F85, F95, XF95F95, XF95

NEW

CODE	
FG 197/DA1	



1/2"

Engine crankshaft rotator DAF

Engine code:
XF105 Euro5

NEW

CODE	
FG 197/DA2	

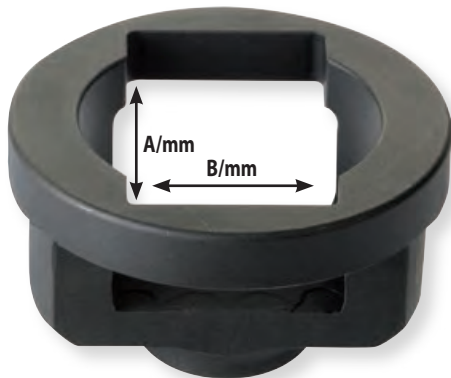


AUTOMOTIVE TOOLS



Octagonal impact socket for locking hub nuts

CODE	Ø mm	Drive	
FG 194/A80	80	41mm	
FG 194/A95	95	3/4"	
FG 194/A100	100	3/4"	
FG 194/A109	109	41mm	
FG 194/A115	115	3/4"	
FG 194/A120	120	41mm	



Impact socket for BPW locking hub nuts

CODE	Ø mm	A/mm	B/mm	Drive	
FG 194/B65	65	65	40	3/4"	
FG 194/B80	80	80	50	3/4"	



Impact socket for BPW locking hub nuts

CODE	Ø mm	Drive	
FG 194/B96	96	3/4"	
FG 194/B111	111	41mm	



Impact socket for BPW locking hub nuts

CODE	Ø mm	Drive	
FG 195/A95	95	36mm	
FG 195/A98	98	36mm	



Impact socket for BPW locking hub nuts

CODE	Ø mm	Drive	
FG 194/A105	105	1"	

NEW

AUTOMOTIVE TOOLS



**1"dr. hub nut socket
- IVECO Daily**

CODE	Ø mm	Drive	
FG 630/B65	65	1"	



**Impact socket for
BPW locking hub nuts
- IVECO EUROCARGO**

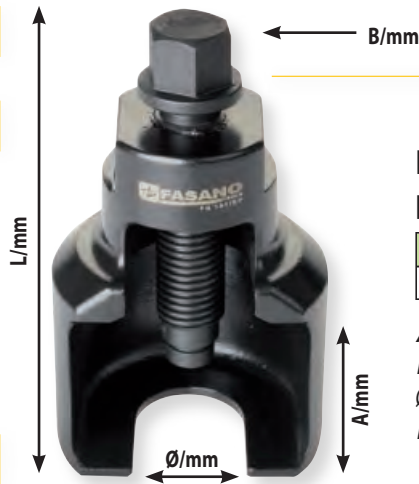
CODE	Ø mm	Drive	
FG 195/A85	85	3/4"	

NEW



**Impact socket for rectangular
nuts MERCEDES, DAF, MAN**

CODE	AxB mm	Attaque	Application	
FG 195/R56	56 x 71	3/4"	Mercedes / DAF	
FG 195/R60	60 x 76	3/4"	Mercedes / MAN	



**Ball joint
puller**

CODE	
FG 197/BP	

A/mm: 60
B/mm: 26
Ø/mm: 39
L/mm: 155



**Impact socket
for axle nuts**

CODE	Ø mm	Attaque	
FG 195/A110	110	36mm	



**Impact socket
for leaf spring**

CODE	Ø mm	Attaque	
FG 196/A37	37x28	3/4"	
FG 196/A46	46x34	3/4"	
FG 196/A56	56x34	3/4"	



**Impact socket
for leaf spring
- VOLVO**

CODE	Ø mm	
FG 196/AV	27mm	



**Set of clutch
alignment tools**

Centerings' sizes:
- Ø 36-45m
- Ø 42-52m

CODE	
FG 180/S6	

NEW