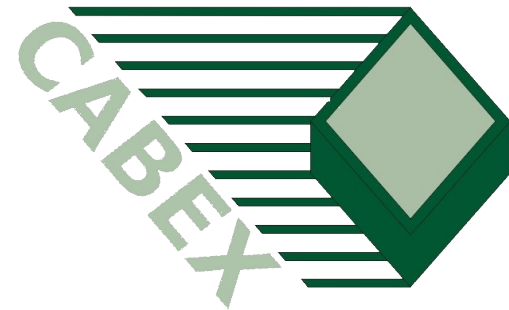
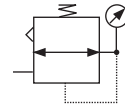


**PIANA**  
compressed  
air



## REGULATORS - TIMELESS SERIES



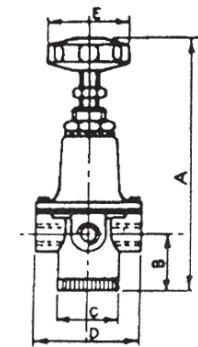
### REGULATOR

The regulator has a reduced pressure range from 0 to 8 bar, handwheel for pressure regulation; the installation can be either panel or bracket mounted.

The regulator is self-relieving and it may be supplied with a gauge Ø 63 0-12 bar. Maximum inlet pressure 20 bar. Environment temperature: -10°C +50°C.

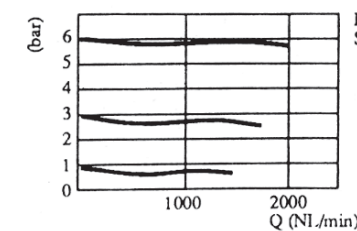


| Model | Size | Code     |
|-------|------|----------|
| R4 SM | 1/4" | 42130203 |
| R4    | 1/4" | 42130213 |
| R3 SM | 3/8" | 42130243 |
| R3    | 3/8" | 42130253 |
| R2 SM | 1/2" | 42130283 |
| R2    | 1/2" | 42130293 |

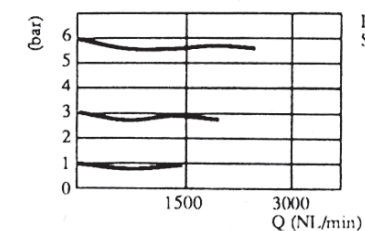


| Size | A<br>mm | B<br>mm | C<br>mm | D<br>mm | E<br>mm | Weight g |
|------|---------|---------|---------|---------|---------|----------|
| 1/4" | 191     | 33,8    | 35      | 75      | 60      | 900      |
| 3/8" | 191     | 33,8    | 35      | 75      | 60      | 900      |
| 1/2" | 199     | 37,8    | 45      | 82      | 60      | 1000     |

The curves give the pressure drop vs reduced pressure and rate.



BOCCHIE 1/4" - 3/8"  
SIZE 1/4" - 3/8"



BOCCHIE 1/2"  
SIZE 1/2"