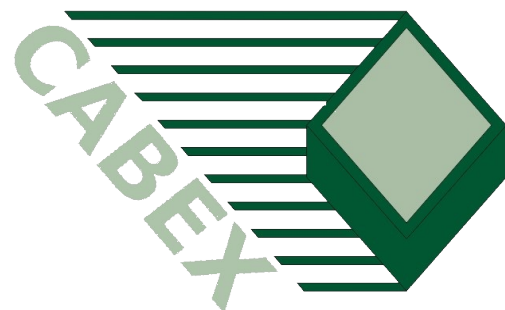
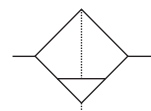


MODULAR FRL UNITS - MDL SERIES



FILTER MDL

Filter body are made in metal, Grilamid bowl, PE filter 32µ, semiautomatic or manual drain cock, inlet and outlet 1/4", max temperature 50° C. Overall dimensions: mm 46 x 45 x 125.



Grilamid bowl manual drain cock

42111003

Grilamid bowl semiautomatic drain cock

42111023

Metallic bowl manual drain cock

42111013

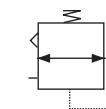
Metallic bowl semiautomatic drain cock

42111033



PRESSURE REGULATOR MDL MINI

Diaphragm regulator with self-relieving and pressure lock knob, set pressure range 0-8 bar, inlet and outlet 1/4", body made in zamak UNI 3715. Overall dimensions: mm 46 x 45 x 90.



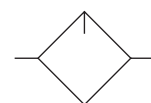
Without gauge
With gauge

42131003
42131013



LUBRICATOR MDL MINI

Body in metal, Grilamid bowl, inlet and outlet 1/4", Grilamid dripper with regulation pin-gasket. Overall dimensions: mm 46 x 45 x 155.



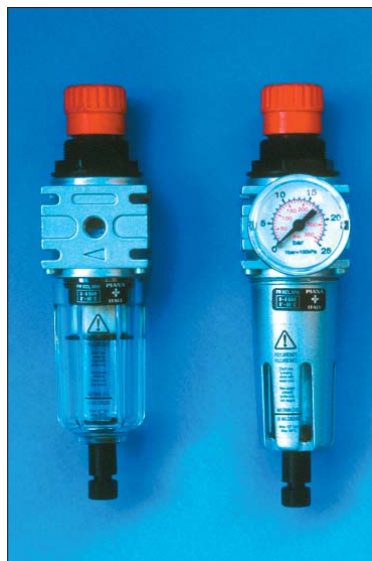
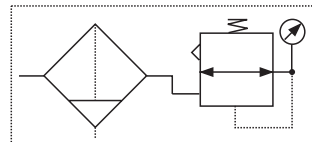
With Grilamid bowl
With metallic bowl

42121003
42121013



MODULAR FRL UNITS - MDL SERIES

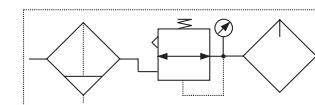
FILTER REGULATOR MDL MINI
Same FILTER and REGULATOR MDL.
Overall dimensions: mm 46 x 45 x 170.



Without gauge Grilamid bowl manual drain cock	42141003
Idem with gauge	42141013
Without gauge metallic bowl manual drain cock	42141023
Idem with gauge	42141033
Without gauge Grilamid bowl semiautomatic drain cock	42141053
Idem with gauge	42141063
Without gauge metallic bowl semiautomatic drain cock	42141083
Idem with gauge	42141073

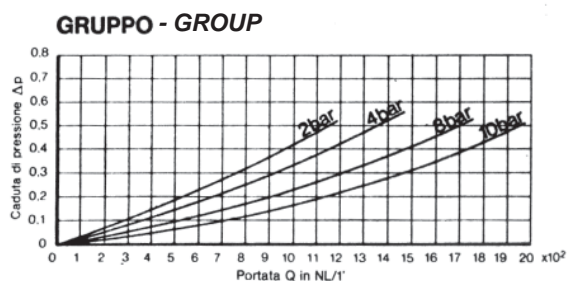
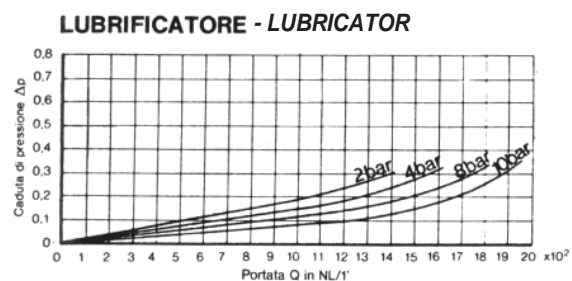
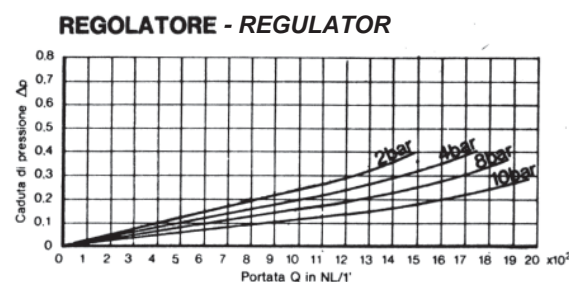
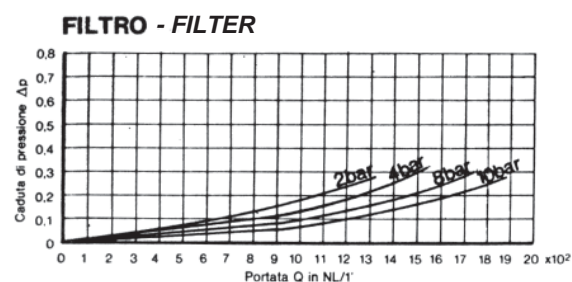
MODULAR FRL UNITS - MDL SERIES

FR+L - MDL COMBINATION
Compound of FILTERREGULATOR and LUBRICATOR MDL.
Overall dimensions: mm 92 x 45 x 170

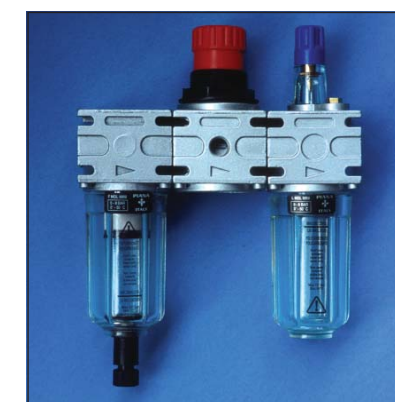
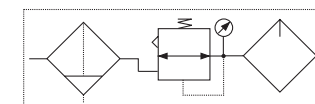


Without gauge Grilamid bowl manual drain cock	42102513
Idem with gauge	42102523
Without gauge metallic bowl manual drain cock	42102533
Idem with gauge	42102543
Without gauge Grilamid bowl semiautomatic drain cock	42102553
Idem with gauge	42102563
Without gauge metallic bowl semiautomatic drain cock	42102573
Idem with gauge	42102583

DIAGRAMMI di FLUSSO • FLOW RATE CURVES • DURCHFLOSS DIAGRAMM



FRL - MDL COMBINATION
Compound of FILTER - REGULATOR - LUBRICATOR MDL.
Overall dimensions: mm 138 x 45 x 170



Without gauge Grilamid bowl manual drain cock	42102003
Idem with gauge	42102013
Without gauge metallic bowl manual drain cock	42102023
Idem with gauge	42102033
Without gauge Grilamid bowl semiautomatic drain cock	42102043
Idem with gauge	42102053
Without gauge metallic bowl semiautomatic drain cock	42102063
Idem with gauge	42102073