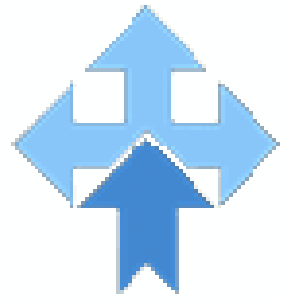
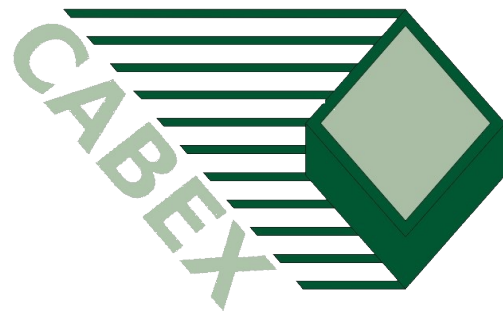


# Antares 50



**PIANA**  
compressed  
air



## MATERIALS USED

- Diecast body of UNI 3715 alloy.
- Cups and drips-trais of GRILAMID high-resistance, shock-proof and splinter-proof, transparent plastic.
- Other parts are of DELRIN - ABS - NYLON V. and BRASS.
- Compensating springs are made of C72 STEEL and are locked, calibrated and tropicalized.

## CONNECTIONS

- 1/4" and 3/8" gas.

## FITTING

- Wall fitted by means of screws directly on the units or with brackets to be applied on the regulator.

## PRESSURE

- Max 12 bar / 170 PSI. - low pressures on request.

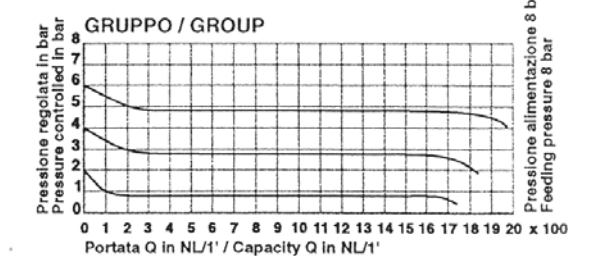
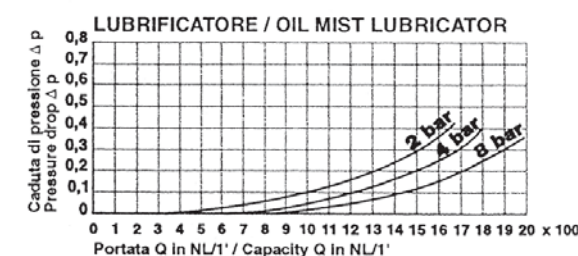
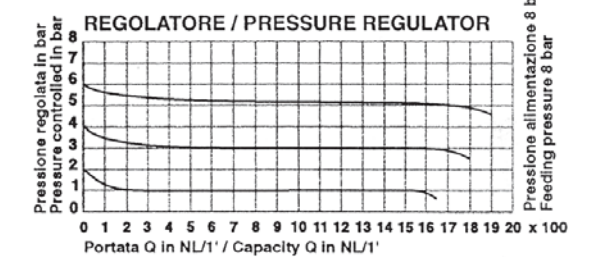
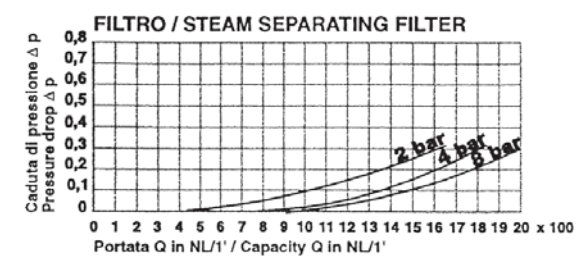
## TEMPERATURES

- Max 50° C / 120° F.

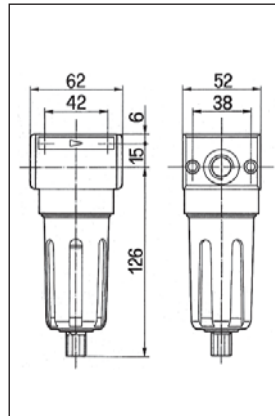
## SURFACE FINISHING

- All the alloy components are treated, after manu-facturing, with oxideproofing and chrome plating, and lastly epossidic enamel stoved.

## FLOW CHART



# Antares 50



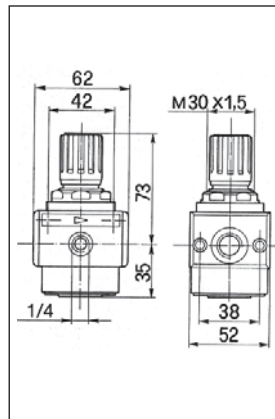
## F50 STEAM SEPARATOR FILTER

**Connectors**  
*Cup capacity*  
*Impurity zone*  
*Filtration degree - Filterfähigkeit*  
*Weight*

*Series semi-automatic drain*

**F50/14 TM**      **Connectors**      **1/4"**      **42111613**  
**F50/38 TM**      **Connectors**      **3/8"**      **42111713**

**F50/14 (1/4" gas)**      **F50/38 (3/8" gas)**  
60 cc  
35 cc  
40 µ  
590 g

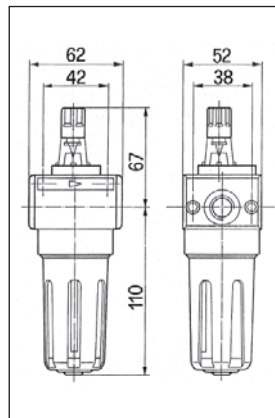
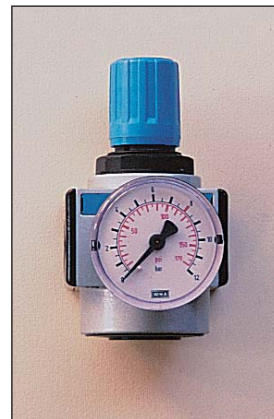


## R50 PRESSURE REGULATOR

**Connectors**  
*Input pressure max - Eingangsdruck*  
*Output pressure max - Ausgangsdruck*  
*Weight*

**R50 / 14**      **Connectors**      **1/4"**      **42131563**  
**R50 / 14 SM**      **Connectors**      **1/4"**      **42131553**  
**R50 / 38**      **Connectors**      **3/8"**      **42131613**  
**R50 / 38 SM**      **Connectors**      **3/8"**      **42131603**

**R50/14 (1/4" gas)**      **R50/38 (3/8" gas)**  
24 bar  
0 ÷ 12 bar  
630 g



## L50 OIL-MIST LUBRICATOR

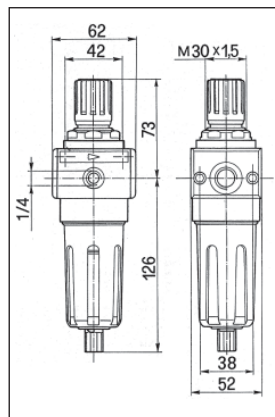
**Connectors**  
*Cup capacity*  
*Max oil level*  
*Weight*

*LUBRICANTS ADVISED*  
(Viscos. 2° E a 50°C)

- BP      ENERGOL HLP 22
- SHELL      TELLUS 22
- ESSO      SPINESSO 22
- MOBIL      DTE 22

**L50 / 14 TM**      **Connectors**      **1/4"**      **42121563**  
**L50 / 38 TM**      **Connectors**      **3/8"**      **42121613**

**L50/14 (1/4" gas)**      **L50/38 (3/8" gas)**  
60 cc  
50 cc  
620 g



## FR50 PRESSURE FILTER-REGULATOR

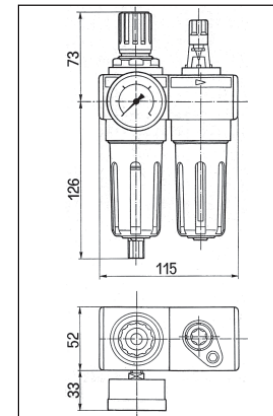
**Connectors**  
*Cup capacity*  
*Impurity zone*  
*Filtration degree*  
*Input pressure max*  
*Output pressure max*  
*Weight*

**FR50 / 14 TM**      **Connectors**      **1/4"**      **42141633**  
**FR50 / 14 TM SM**      **Connectors**      **1/4"**      **42141623**  
**FR50 / 38 TM**      **Connectors**      **3/8"**      **42141733**  
**FR50 / 38 TM SM**      **Connectors**      **3/8"**      **42141723**

**FR50/14 (1/4" gas)**      **FR50/38 (3/8" gas)**  
60 cc  
35 cc  
40 µ  
24 bar  
0 ÷ 12 bar  
700 g



# Antares 50



## FR+L50 TWO-UNIT COMPLETE GROUP

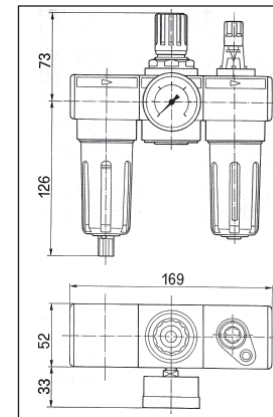
**Connectors**  
*Weight*

*ASSEMBLY BY:*

- **FR50**      *Pressure filter regulator*
- **L50**      *Oil-mist lubricator*

**FR+L50 / 14 TM**      **Connectors**      **1/4"**      **42103633**  
**FR+L50 / 14 TM SM**      **Connectors**      **1/4"**      **42103623**  
**FR+L50 / 38 TM**      **Connectors**      **3/8"**      **42103733**  
**FR+L50 / 38 TM SM**      **Connectors**      **3/8"**      **42103723**

**50/14 (1/4" gas)**      **50/38 (3/8" gas)**  
1220 g



## FRL50 THREE-UNIT COMPLETE GROUP

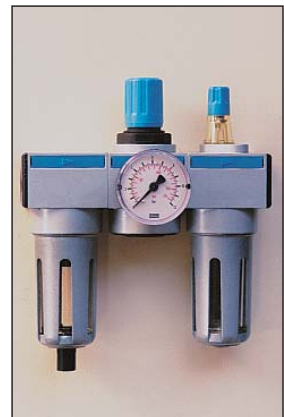
**Connectors**  
*Weight*

*ASSEMBLY BY:*

- **F50**      *Steam separator filter*
- **R50**      *Pressure regulator*
- **L50**      *Oil-mist lubricator*

**FRL50 / 14 TM**      **Connectors**      **1/4"**      **42103133**  
**FRL50 / 14 TM SM**      **Connectors**      **1/4"**      **42103123**  
**FRL50 / 38 TM**      **Connectors**      **3/8"**      **42103233**  
**FRL50 / 38 TM SM**      **Connectors**      **3/8"**      **42103223**

**50/14 (1/4" gas)**      **50/38 (3/8" gas)**  
1640 g



## SPARE PARTS - ACCESSORIES

<b>BOWL F50</b>	<b>27402601</b>
<b>BOWL L50</b>	<b>27402901</b>
<b>METALLIC PROTECTION FL50</b>	<b>25208240</b>
<b>OR 3068</b>	<b>37302461</b>
<b>PLASTIC PLAQUE F/R/L 50</b>	<b>37101331</b>
<b>PLASTIC SCREW COVER F/R/L 50</b>	<b>37101181</b>
<b>FILTER CARTRIDGE F40 / 50 / 60</b>	<b>39101011</b>

**WARNING** • The units must not be exposed to exhalations or be directly in contact with corrosive or flammable liquids: the transparent parts would be damaged. To clean cups use water and common household detergents. Unappropriate oils deteriorate the transparent material on the lubricator and the components downstream. Use only oils as specified.