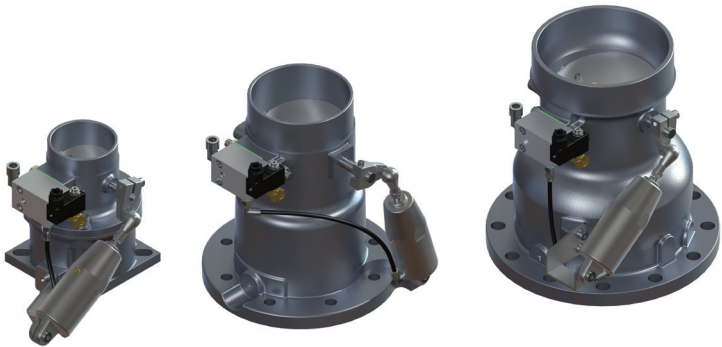
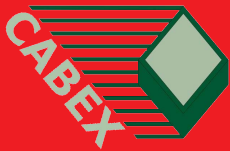


Intake Valve RBC Series



APPLICATION: Installed on the compressor inlet to control compressor capacity. During normal operation the valve open and close in response to a control signal to meet the air demand. Stepless or two point capacity controls are available. At the shut-down a check valve stays closed to prevent back flow through the compressor also if the air flow is interrupted. Many solutions are available for stationary or mobile compressors.

INSTALLATION: On the suction flange of the air-end, either directly or by flange adapt or, depending on the type of air-end. The valve must be connect to the signal pressure and solenoid valve.

REPLACEMENT: The stress on valve parts depends on compressor application and operating parameters. Inspect the valve and replace, using VMC spare parts kit, after 8.000 operating hours.

NOTE: The RBC serie is also available for Natural Gas and Water Lubricated applications.

TECHNICAL DATA

SIZE	RBC 90	RBC 120	RBC 160
Flowrate fully open	See the diagram		
Nominal Diameter mm - inch	Ø90 – Ø3.54	Ø120 – Ø4.72	Ø160 – Ø6.3
Working System Avaiable	Non-return, On/Off and Proportional		
Working pressure	up to 16 bar - up to 232 psi		
Solenoid-valve voltage	24V, 110V or 230V		
Materials	Unit is made in aluminium alloy. Inside parts in aluminium alloy, stainless steel, brass, viton sealings and PTFE		
Adjustment	Adjustable control device to unload vessel through inlet manifold during idling		

