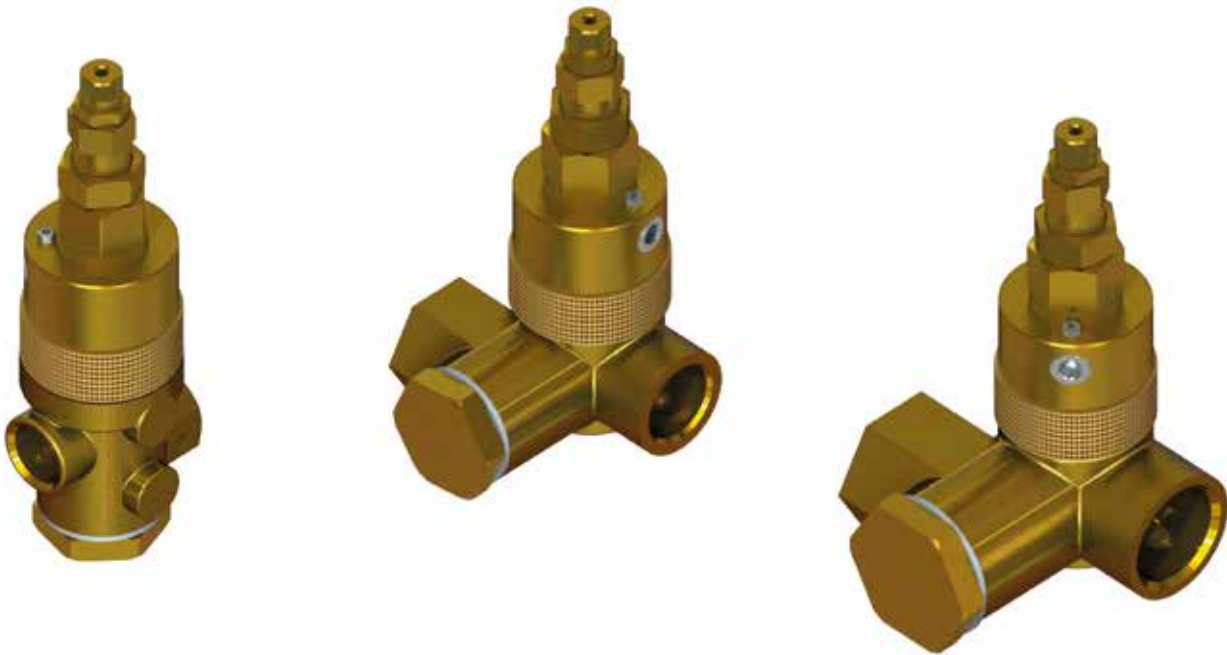
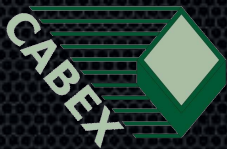


# IDLING DEVICE



**MAIN FEATURES:**

An idling device is usually installed on the air tank receiver of a piston compressor to control its working pressure. It includes a non-return valve and an adjusting screw setting up the cut-on/cut-off pressure, an extra port that can be connected to the accelerator/actuator. It is available in different versions based on the various piston compressor sizes.

**MAINTENANCE:**

The wear-and-tear of valve components depends on compressor applications and operating parameters. Valve inspection and ordinary maintenance are recommended using VMC's original spare parts kits whose instructions are indicated in the maintenance and trouble-shooting document.

TECHNICAL DATA		A1	B2	C2	D2	E1
Air Flow	m³/min - cfm	0,18 - 6,3	0,35 - 12,3	0,8 - 28,2	1,5 - 53	3 - 106
Air Inlet-Outlet		G 1/4"	G 3/8"	G 1/2"	G 3/4"	G 1-1/4"
DIMENSIONS						
X	mm/inch	-	-	49 - 1,92	56 - 2,2	89 - 3,5
J	mm/inch	45 - 1,77	45 - 1,77	57 - 2,24	68 - 2,67	87 - 3,42
Z	mm/inch	Ø38 - Ø1,49	Ø38 - Ø1,49	70 - 2,75	76 - 2,99	118 - 4,64
K	mm/inch	118 - 4,64	140 - 5,5	117 - 4,6	122 - 4,8	132 - 5,2
P		G 1/8"	G 1/8"	G 1/8"	G 1/8"	-

Attention: The drawing below is not suitable for all models. Please log on to our website for specific drawings.

